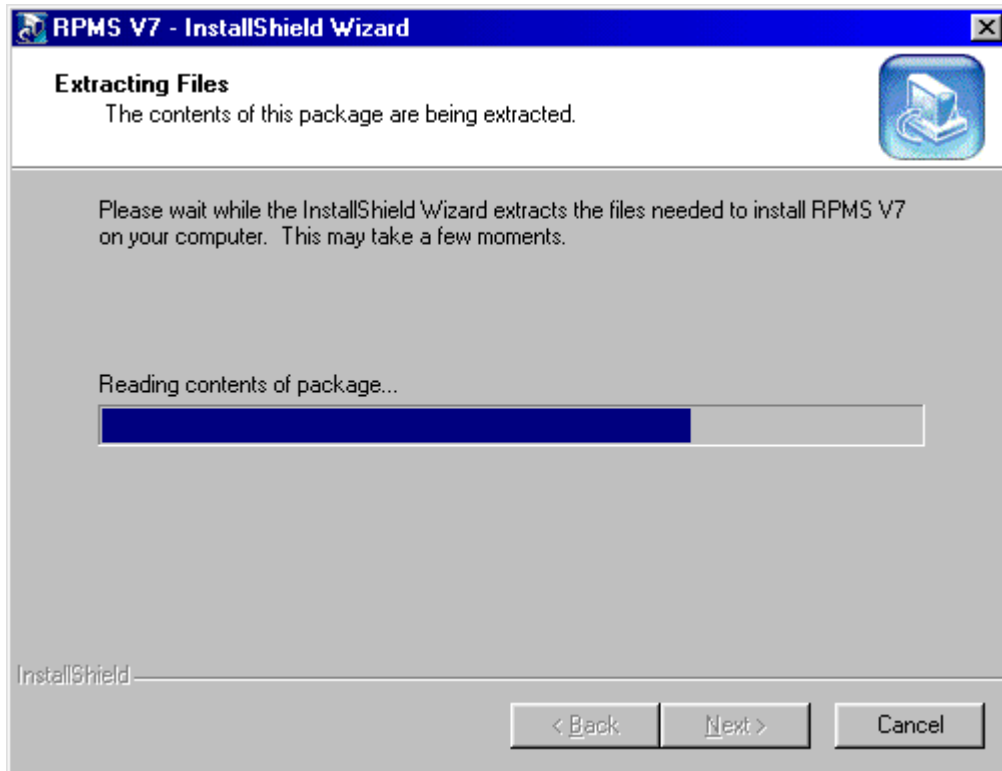


## Installing RPMS Version 7

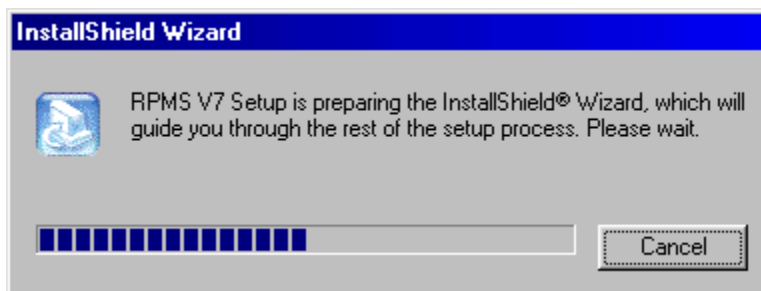
Insert the RPMS Version 7 CD-ROM into your CD-ROM drive.

Go to Start...Run...and type d:setup, and press Enter. (Substitute d: for the drive letter of your CD-ROM)

The following screen will appear:

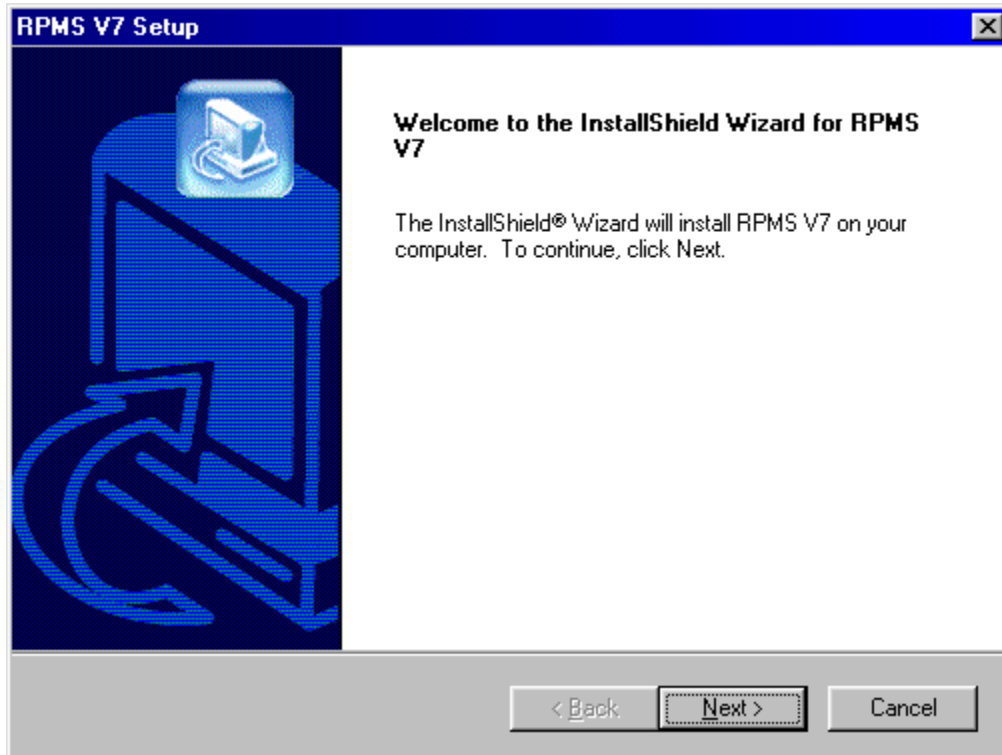


After a few seconds of unpacking files, the following screen appears:



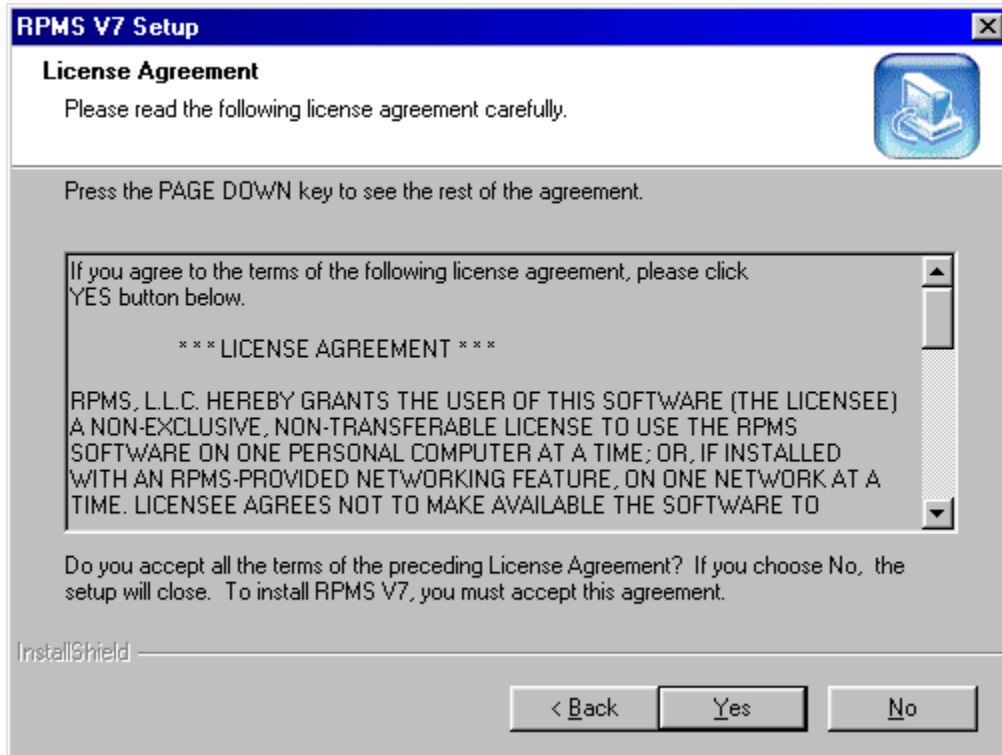
## Welcome

When the installation has unpacked its files, the following welcome screen will appear:



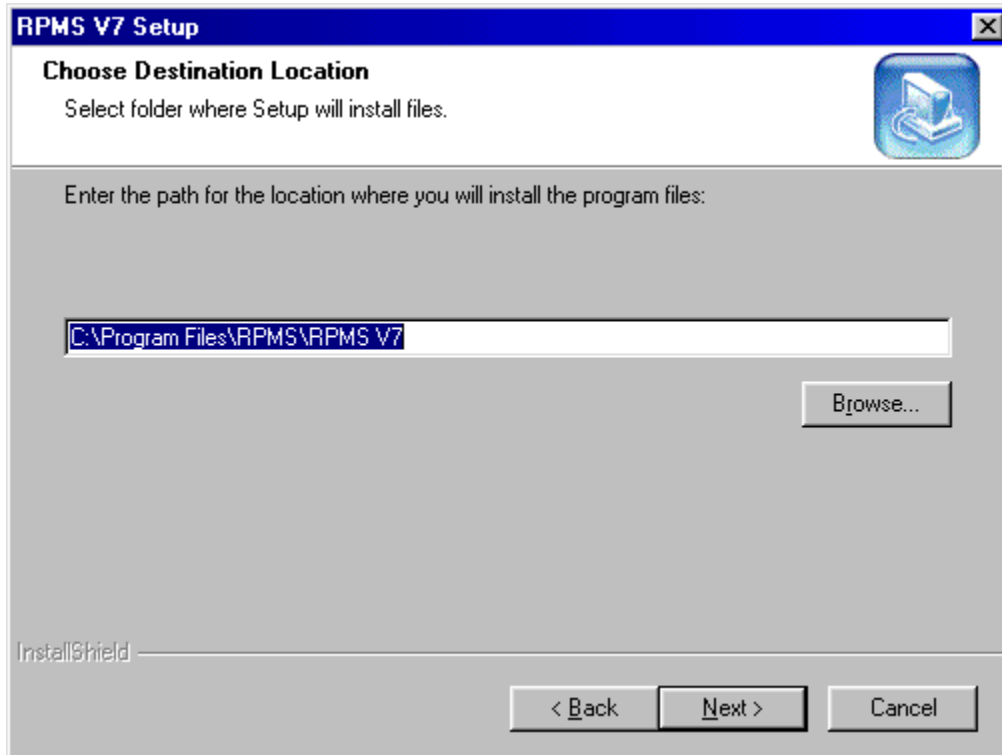
Click 'Next' to continue to the license agreement screen.

## License Agreement



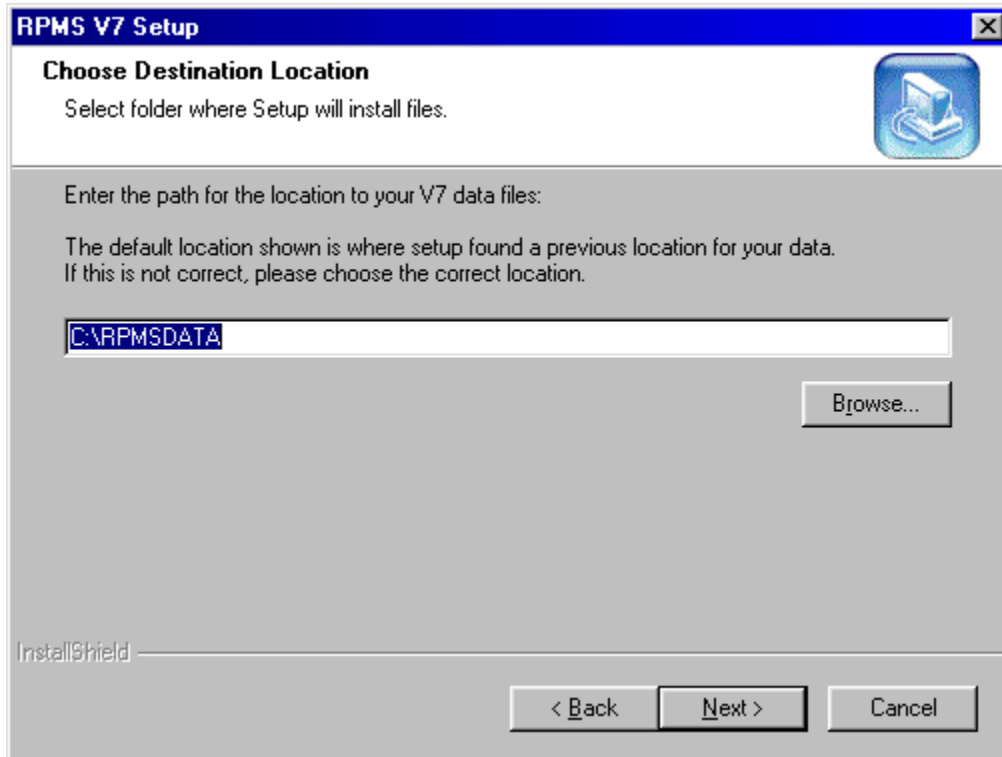
Read the license agreement and if you agree with its terms, select 'Yes' to continue with the next part of the installation.

## Program Files Location



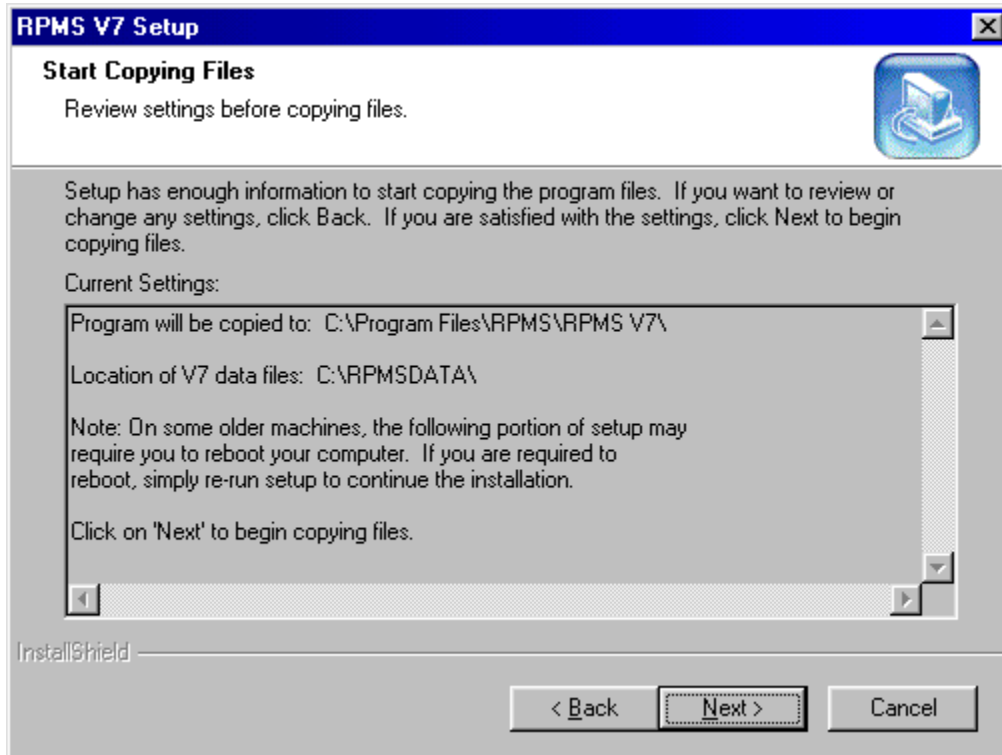
Select the folder where you want to install the RPMS program files. By default, 'C:\Program Files\RPMS\RPMS V7' is entered for you. If you wish to change this, type in the drive letter and path where you want the programs to go. It is recommended that you place the programs on your local (C:) drive. You may enter the path in the text box provided, or select 'Browse' to locate a folder. When ready, click 'Next' to continue.

## Data Files Location



This screen prompts you for the location of your Version 7 data files (RP\*.MKD). If you are the system administrator that will convert the V6 data, specify the location of your V6 data. If your data has already been converted by your system administrator, check with them for the location of the V7 data. The default folder shown may be the location where setup found previously installed RPMS data. If RPMS has never been installed on this computer, the data location defaults to C:\RPMSDATA. If you wish to access data in a different location, enter it in the text box provided, or choose 'Browse' to locate the folder. When ready, click 'Next' to continue.

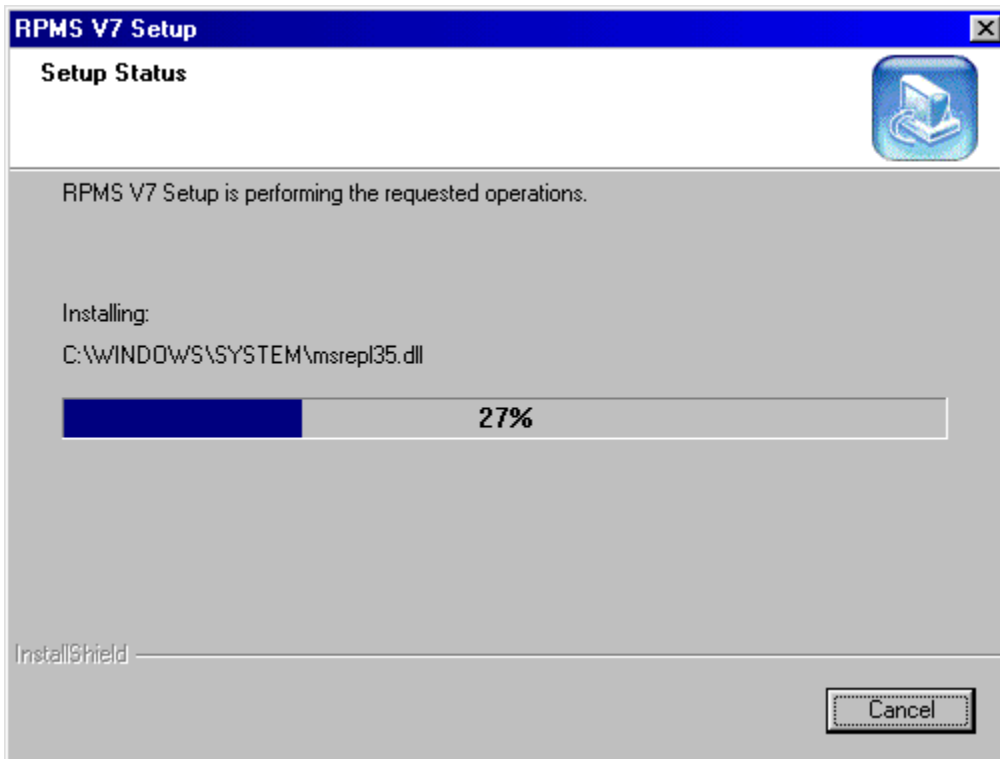
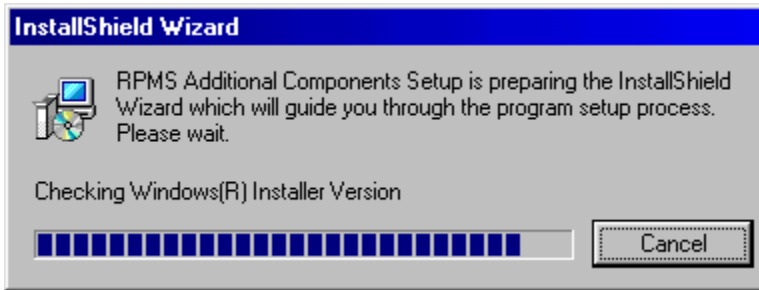
## Copying Files



This screen shows a summary of the setup, and allows you to go back and change something if it is not correct. On some machines that have not had any prior Windows Installer installations, setup may require you to reboot your computer once in order to install some Windows Installer files. If this is the case, allow your PC to reboot and simply re-run the setup program. Review the screen and click 'Next' to continue with the file copy process.

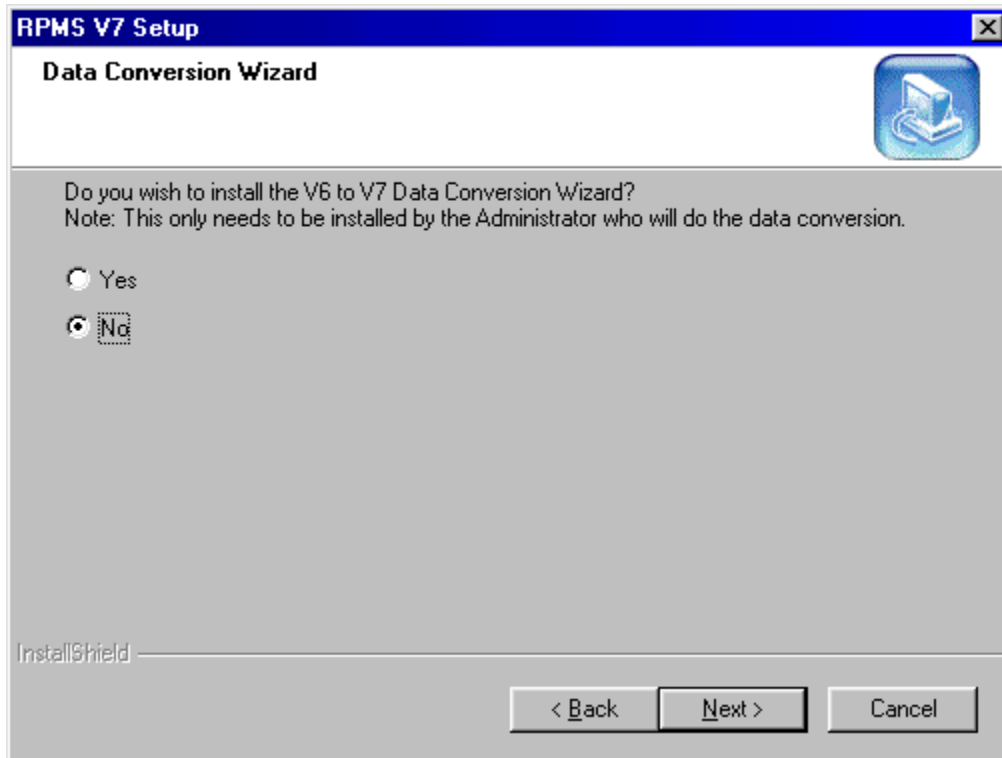
**Copying Files (cont'd)**

Installation continues and the file copy process begins as shown on the following screens:

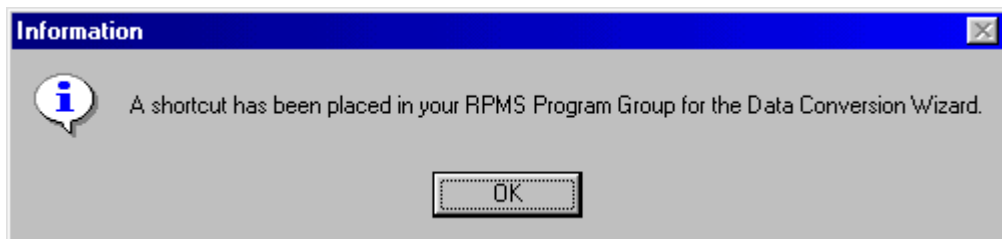


Once files are copied, you will be presented with the 'Data Conversion Wizard' installation selection.

## Data Conversion Wizard



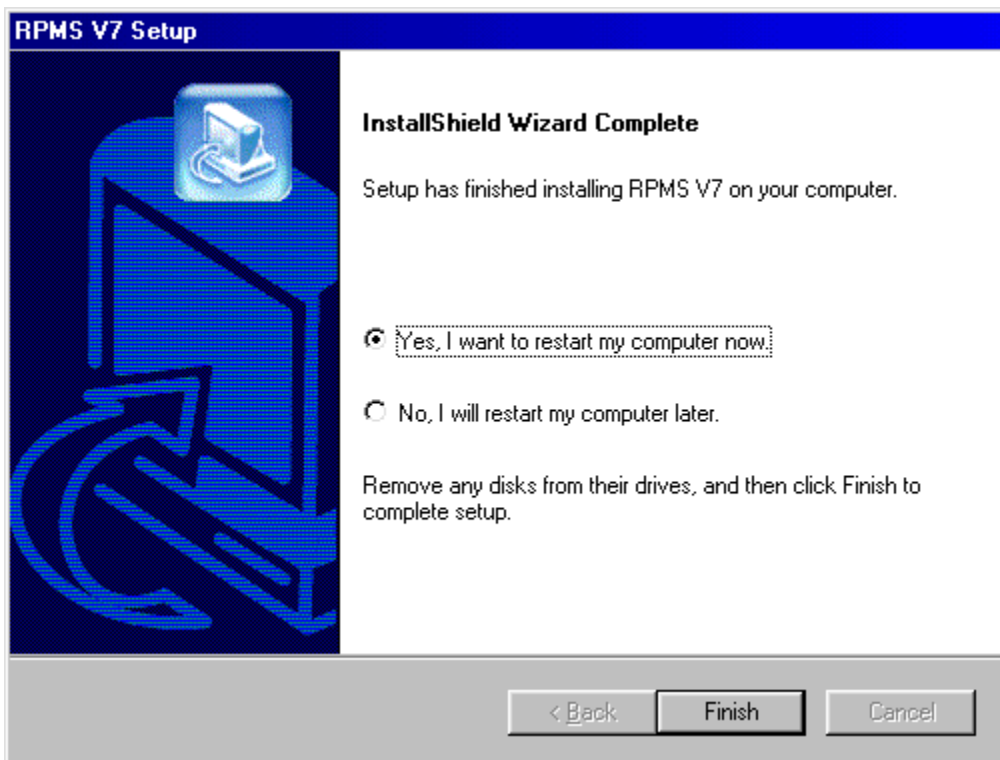
This screen prompts you to install the V6 to V7 Data Conversion Wizard. This only needs to be installed by the Administrator who will do the actual data conversion. The default of 'No' is selected for most users. If you choose 'Yes', the following screen will appear, otherwise you may proceed with 'Finishing Up Installation' on the next page.



If you selected 'Yes' on the previous screen, a shortcut will be placed to the Data Conversion Wizard in the RPMS V7 Program Group ( e.g. Start...Programs...RPMS V7...Data Conversion Wizard). Click 'OK' to finish up the installation.

## Finishing Up Installation

When all files have been copied to their respective locations, it is advised that you select ‘Yes’ on the following screen to reboot the PC and finish writing information to the registry. You MUST reboot at some point to finish the installation.



Once your computer has been rebooted and the desktop is displayed, you will see an icon for ‘RPMS V7’. A new program group will also be created for you under Start...Programs...RPMS Version 7. Double-clicking the desktop icon (or choosing Start...Programs...RPMS Version 7...RPMS V7) will run RPMS Version 7 from the data location you specified during setup.



RPMS V7